



- Accurate location
- Dual Mode location
- 4G network
- Historical route playback
- Electronic Fence
- SMS and APP
- Power-off alarm
- Speeding alarm
- Vibration alarm
- Tracking Platform
- Regular upload
- Continuous operation mode
- Query status
- Owner Binding

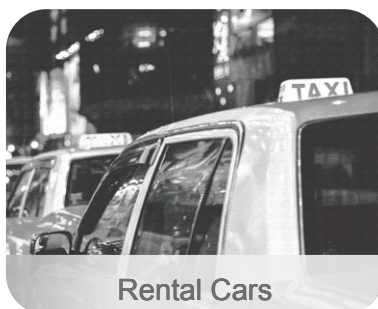
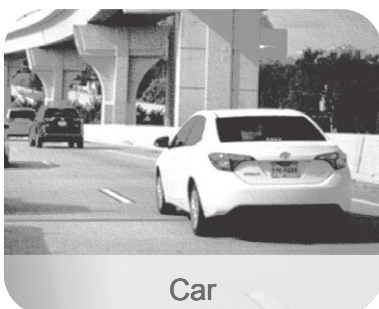


G-M100

OBD2 real time tracking, no installation.

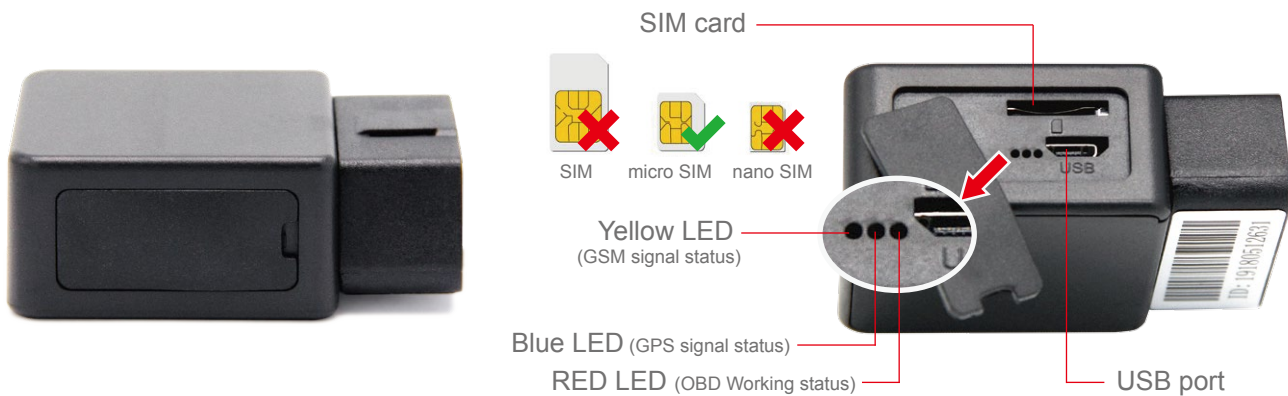
- 54g
- 59mm × 45mm × 22mm
- 20 C ~75 C
- Working voltage: DC 9–35V plug and play

The G-M100 is a 4g wireless communication technology and gps/bd system positioning technology, which is a 4g intelligent information acquisition terminal built for the car network. with obd data flow detection, fault code detection, frame number reading, fatigue driving setting, power off alarm, overspeed alarm, water temperature threshold setting, idle alarm, wifi network hot spots and so on. with a global positioning service platform to achieve real-time acquisition of vehicle data, tracking and positioning, and vehicle status monitoring.



G-M100

	Region	Communication module	GNSS Type	Position Accuracy	Certificate
G-M100	Worldwide	Customized Service	u-blox All-in-One GNSS receiver	≤10 meters	CE



SPECIFICATIONS

Working voltage	DC 9–35V
Working temperature	-20 °C ~+75 °C
Storage temperature	-30 °C ~+80 °C
Working humidity	10%-85% RH does not clot
Backup battery	80mAh (3.7V polymer battery)
Hot Start	≤3sec(open sky)
Cold start	≤35sec(open sky)
QUECTEL EC20 module	4G:LTE FDD:B1/B3/B5/B8 LTE TDD: B34/B38/B39/B40/B41 3G :WCDMA:B1/B8 :TD-SCDMA:B34/B39 2G :CDMA:BC0 900/1800MHz Customized Service
GPS sensitivity	-162 dBm
OBD data	Only Public protocol
Driving behavior	According to the vehicle data and status, it is analyzed whether the driver has a bad driving behavior such as rapid acceleration, sudden deceleration, sharp turn, etc. during the trip.