



深圳市龙桥科技发展有限公司

SHENZHEN DRAGON BRIDGE TECHNOLOGY LTD COMPANY

*Application :Rental cars, insurance cars, trucks, buses*

*Wireless Fleet management Solution Innovator*

*GSM/GPRS/GPS Tracker*

## User Manuel

TK-804



## Contents

1 Introduction.....	2
1.1 product description.....	2
2 Product Overview.....	2
2.1 Product accessories.....	2
2.2 Interface Definition.....	2
2.3 Parameters.....	3
3 Product Function.....	5
4 Function Description.....	5
4.1 Location Update Schedule Modes:.....	5
4.2 Historical Location Playback.....	6
4.3 Geo-fence (safe zone):.....	6
4.4 Calling:.....	6
4.5 Health pedometer steps.....	7
4.6 Medication reminders.....	7
4.7 Power saving mode.....	7
4.8 Light effect description.....	8
5 The APP.....	8
5.1 Download and install the App “Aibeile Plus”.....	8
5.2 Registering the tracker and log in:.....	8
5.3 Connecting the GPS tracker to your APP account:.....	9
5.4 Add and Delete the device.....	10
5.5 Adding a secondary administrator account: .....	11
6 APP Interface.....	12


## 1 Introduction

### 1.1 product description

It's a mini 4g intelligent Personal GPS Tracker, can view the location of the tracker at any time through your phone. Also with two ways communication, history route, Geo fence, IP67 Waterproof, Health pedometer, SOS button and other functions.

## 2 Product Overview

### 2.1 Product accessories

Items	description
Main device	

### 2.2 Interface Definition

Host interface



## 2.3 Parameters

Items	description
Position	GPS+WIFI+LBS positioning
Overseas version of the frequency band	LTE FDD: B1 B2 B3 B4 B5 B7 B20 WCDMA: Band 1\2\5\ GSM: Band 2\3\5\ 
Whole machine size	56mm*42mm*18mm
Weight	49g
Button	Single button (Power button/SOS button)
SIM card	1pcs
Battery capacity	10000mAh Lithium polymer battery
Storage	256M+512M
G-senser	Support
Applicable environment	-20 C ~50°C
Working humidity	5%-95% RH does not clot
GPS chip	9820E
GPS signal	L1,1575.42MHz C/A
GPS channel number	22 channels
GPS chip receive sensitivity	Tracking sensitivity: -165dBm, capture sensitivity: -148dBm
GPS location accuracy	5-15m
WIFI indoor positioning	20-100m
LBS location accuracy	100-1000m
Positioning accuracy	<10 meters
Test and certification	CE Certificatio
GPS antenna	High sensitive ceramics active antenna
GSM antenna	Radium antenna
Waterproof grade	IP67
I/O port	Magnetic suction charging

Support operate system	Support 2.3 and above Android system, IOS 5.0 and above
Call function	Two way talk/SOS calling/ white list/ do not disturb mode
Language support	English, Many other languages (Compatible with support for multi-languages)
Support AGPS	Cool start 26 seconds positioning

## 2.4 How to use the Tracker

(1) Install the standard Nano-SIM card (select 4g SIM card for LTE network) according to the SIM card installation method. The SIM card needs to enable voice, SMS, data services (4G is recommended) and caller ID service.

(2) SIM card installation method:



Insert a suitable 4G SIM card with the gold side facing upwards and the diagonal corner facing the bottom right corner of the tracker – see image for details.

(3) Power on: Press and hold the power button until the motor vibrates to release your hand

(4) How to power off:

(Option 1): Press the power button 10 times continuously within 5 seconds

(Option 2) by APP: Settings / 'Remote Shutdown'

(5) Reboot: Press the power button for 15 seconds, the tracker will reboot.

- (6) Battery Charge: use the magnetic charging lead to attach to the back of the tracker (it will only connect one way), connect the other end of the cable to the supplied USB charger 5V1A / 5V2A or other sources.

Please do not use fast charger, use only 5V chargers or USB ports, higher voltage may damage the device.

### 3 Product Function

1. Real-time GPS, WIFI & CELL location
2. Historical route
3. Geo-fence
4. Calling (phone book, SOS call button, two-way communication)
5. Health pedometer
6. Medication reminders
7. Power saving mode
8. Other settings and functions

### 4 Function Description

#### 4.1 Location Update Schedule Modes:

There are three location update modes. User can switch the working mode via mobile phone APP, Click 'Settings' button top of App / Set 'Location Update schedule'.

1. Normal mode: Updates location data to APP every 10 minutes when there is a continuous movement
2. Power saving mode: Updates location data to APP every hour when there is continuous movement.
3. Sleep Mode: It is the default mode and simply means that Geo-fence (safe zone) and location updates are both turned off. The user can locate the GPS tracker at any time in this mode with the "Locate" button, this mode is the best way to save battery.

Note: ① Under the above three modes, the user can check the current location of the device in real-time by APP. Open the APP in the map interface, click on the locate button, and the GPS tracker will report the up-to-date position as soon as possible.

② in the map, you can see the type of positioning in different colors, WIFI positioning is orange, GPS positioning is blue, LBS positioning is purple

③ In the 10 minutes or 1 hour movement tracking mode, the GPS tracker will regularly update the location on the APP Map page and History

④ The device supports GPS tracking (Outdoor), WIFI tracking (Outdoor and indoor), LBS tracking (Outdoor and indoor). The primary difference between GPS and Wi-Fi locating technologies is in the method of gathering location data. GPS uses satellites that orbit around the Earth to triangulate a user's location, whereas Wi-Fi locating technology uses relative network signal strength gathered at network access points. GPS tracking is available in out-door but mostly not available for indoor. When the GPS tracker doesn't find GPS signal, it will use Wi-Fi or LBS tracking, Wi-Fi tracking is better for indoor comparing with LBS tracking.

#### 4.2 Historical Location Playback

In the main page of the APP, click the history button in the bottom, you can check the location history playback within the last three months.

#### 4.3 Geo-fence (safe zone):

This feature defines a Geo-fence (safe zone) perimeter and sends the user a push notification if the tracker has left or entered the safe zone.

The user can still manually locate the tracker when the safe zone is turned on/off. Click 'More' → 'Geo-fence' → click the "+" icon in the bottom → input the zone name → Click and drag the map to set the center point → click on the "+" "-" icon or drag to set the coordinates regional context → click OK in the upper right corner to save the setting.

Note:

The app will show enter or leave geofence alarm information (History alarm information can be viewed in APP Information Center, which is in the upper left corner of the map interface).

The APP may not notify the user immediately of a geofence breach - it will only check as often as the time interval is set, the GPS positioning time interval is shorter, the alarm information will be sent faster.

The user can set up to three Geo-fences.

#### 4.4 Calling:

1) SOS Calling:

Click APP More → Settings → SOS Numbers - Enter SOS phone numbers, click save.

2) One Button SOS: in case of emergency, long press the power button to trigger the emergency call SOS. At this time, the tracker will call the 3 preset emergency numbers circularly, the default is one looping SOS calling.

### 3) Phonebook:

① Add a contact: Click APP More → Settings → Phone Book - Click the Add icon → Remarks name, numbers, and picture (can be set up to 15 numbers), and finally click OK to save.

Note: The SOS number and phone book are set so that the numbers inside can make two-way communication with the device. The numbers that are not inside will be blocked.

### 4.5 Health pedometer steps

Pedometer feature set: APP More → Healthy steps → Click on the Settings icon - Add pedometer period time (up to three), and click “save”.

### 4.6 Medication reminders

APP more → Settings → medication reminders → Set medication reminders and reminder time text, voice → to save.

Note: (1) user can set the frequency as single, daily and weekly

(2) Set up to three groups.

### 4.7 Power saving mode

(1) Mode 1: The device will be disconnected from the network for a while. After disconnection, the device will be connected to the network again by shocking to add steps or making a phone call. If it is still, then it will be disconnecting the network again.

Setting method:

send this command: pw,123456,ps,1#

Set the time of the mode, send this command: pw,123456,pstim,x#

(x is time in minutes, x is an integer multiple of 5, for example, pw,123456,ps,5#)

(2) Mode 2: When the device keeps still for a while, then it will be disconnected from the network. After disconnection, the network will be re-connected by sending text messages or calling. If it is still again, then it will be disconnecting the network again.

Setting method:

send this command: pw,123456,ps,2#

Set the time of the mode, send command: pw,123456,pstim,x#

(x is time in minutes. x is an integer multiple of 5, for example, pw,123456,ps,5#)

The SMS command to resume networking: pw,123456,rouse#



(3) Mode 0: The device will connect to the network in this mode. Send this command: pw,123456,ps,0# then can exit mode 1 or mode 2 to resume normal networking

#### Other settings and functions

There are many other functions of this device, which can be operated and used by users through mobile APP.

#### 4.8 Light effect description

1. Turn on: The LED lights turn on, and go round
2. Shut down: All-LED lights are all on first, then all off.
3. Charging: During the charging process, one light is always on, and after full of charging, then the light off.
4. Find equipment and SOS: The LED lights go five rounds
5. How to check if the network is abnormal: Press the SOS button, the three lights will be on
6. How to check if the network is normal: Press the SOS button, and one light will be on.

## 5 The APP

### 5.1 Download and install the App “Aibeile Plus”

(Option1) - Scan the following QR code, download and install the App



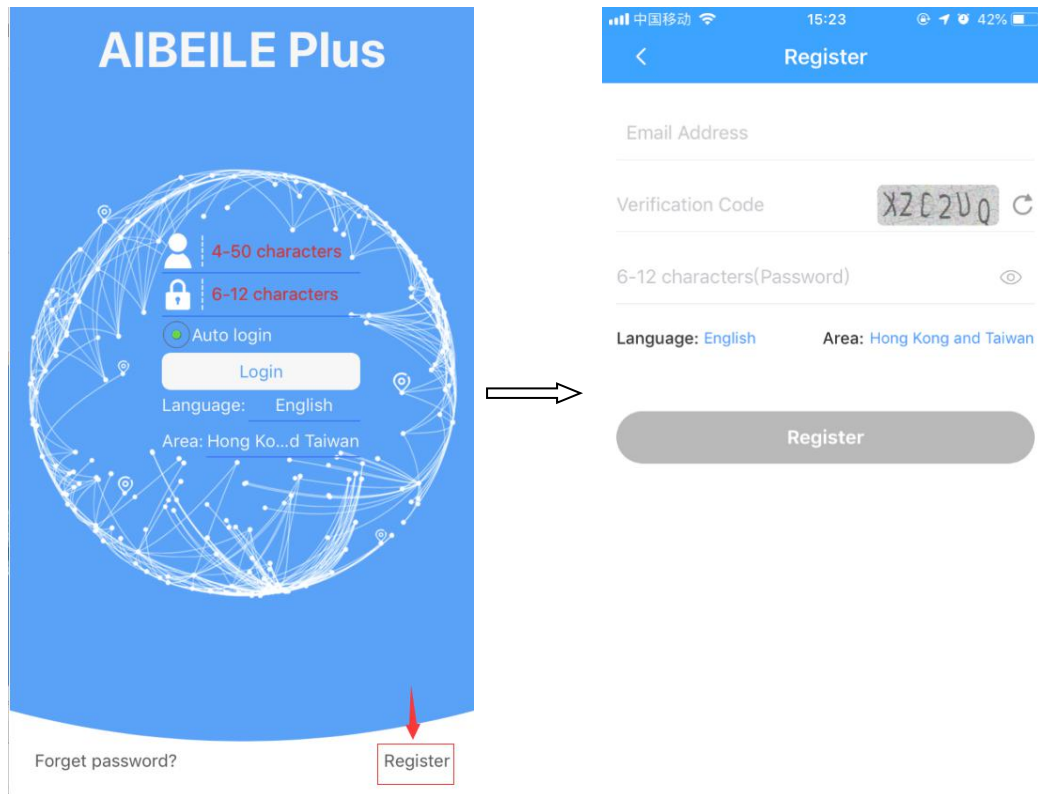
(Option 2) - Scan the QR code in the GPS Tracker in ‘More’

(Option 3) -Search “Aibeile Plus” in App Store - Apple or Google Play

Note: During installation, the phone prompts whether to trust the APP or whether to allow prompt access to phone location, etc. Please select trusted and allowed all the time.

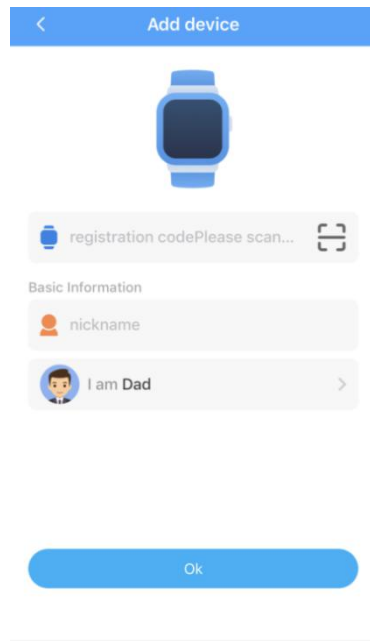
### 5.2 Registering the tracker and log in:

Open the App, new users will need to register a new account by clicking on the bottom right “Register” button, complete the registration steps. Please note that you will need to select the right area you are located in, for example, if you’re in Europe, you need to choose “Area” as Europe. If you’re in Australia, you need to choose “Area” as “Asia and Oceania”. You also need to input a correct email address to ensure you can reset your password if needed.



### 5.3 Connecting the GPS tracker to your APP account:

After successful registration, log in to the account, select ‘More’ → Device list → Add device, Click scan icon to scan the QR code on the GPS tracker.



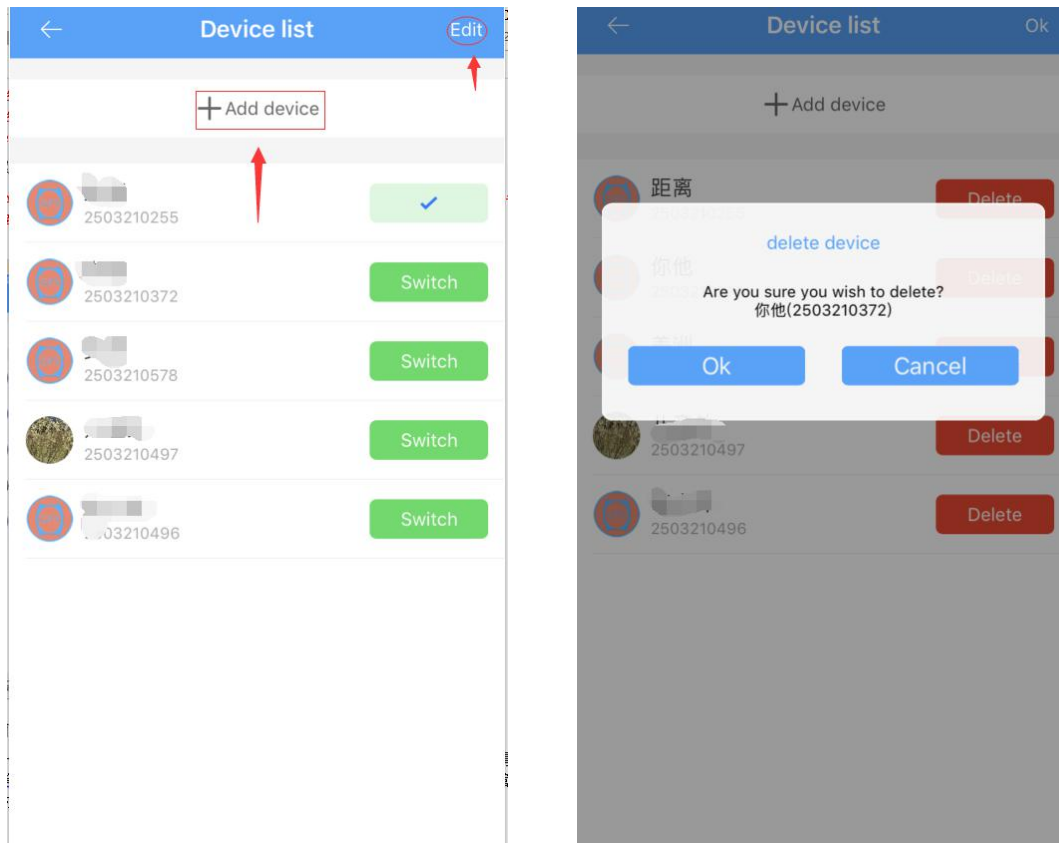
Note: The Registration QR code is the 15-digit registration number found on the QR sticker on the back of the tracker, it is not the IMEI barcode number.

#### 5.4 Add and Delete the device

1)How to add the device to your account: More——Device list——Add device——put the regcode of tracker

2)How to delete the device from your account:

More——Device list——Edit——Delete——Ok

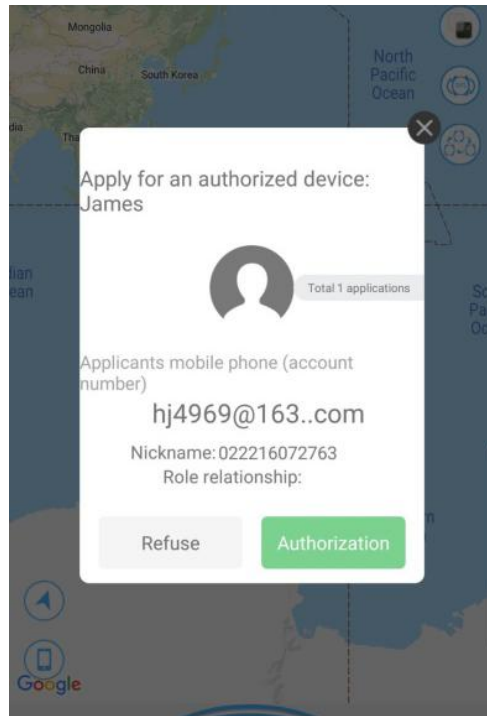


### 5.5 Adding a secondary administrator account:

The first account created for the GPS Tracker is the primary administrator account. You can add a secondary account to the app for two parents, as an example, to be able to log in. Adding a secondary administrator account requires authorization from the primary administrator, there will be a note when the secondary administrator account wants to add the same GPS tracker, the primary administrator will also receive the authorization notification.

Note: One APP account can bind multiple GPS trackers; while one GPS tracker can also be connected with multiple secondary accounts with the authorization from the primary administrator.

The screen below will appear inside your (the main administrator) App account for authorization after the secondary administrator has scanned the same tracker QR code into their App.

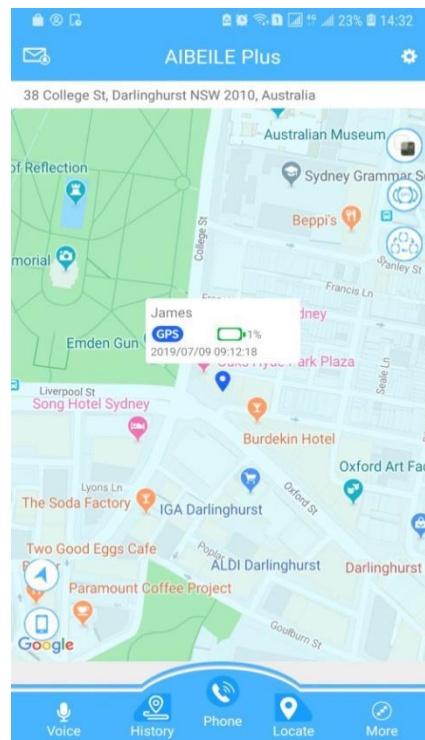


Note: One account can add multiple devices, and one device can be added to multiple accounts

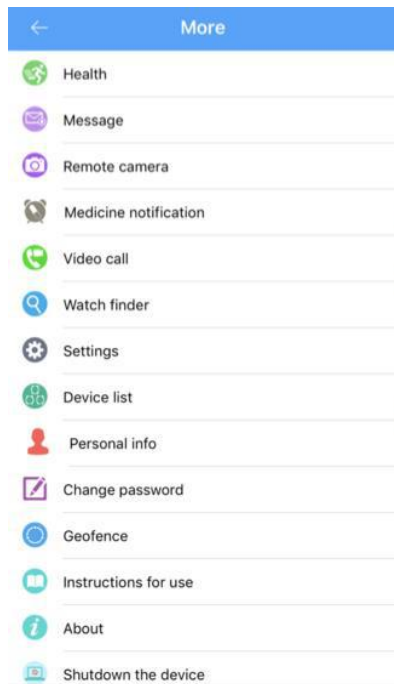
## 6 APP Interface



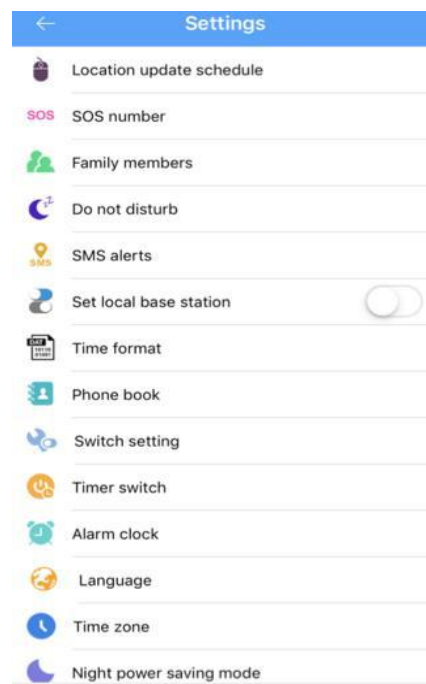
Login screen



Main page with map, click "More"



Click “Settings”



Click “Family Members”

#### Declaration:

- If you are removing or tampering with the product casing, the product will void the warranty.
- The manufacturer shall not be liable for illegally use of the product.
- By using this GPS tracker, you acknowledge that you accept the following precautions terms. In the event that you do not understand or accept any of the precaution terms herein, you should discontinue your use of this GPS Tracker.

#### Precautions

1. Do not immerse the product in liquid or chemicals such as salty water and detergents.
2. Do not wear the product in the shower, in case different PH range of shower gel, shampoo, and conditioner, or hot water damages the GPS tracker.
3. Keep the product away from fire, heat and other extreme high- temperature environments;
4. Keep out of children’s mouths;
5. Use only 5V chargers or USB ports, because higher voltage may damage the device;
6. Do not directly attach the magnetic charging lead to any metal or conductive objects except the GPS Tracker, otherwise, it may cause the charging head to short circuit.
7. In the case of excessive heating of the battery during charging, immediately disconnect it from the power supply.

8. Before first use, fully charge the battery.
9. If the tracker heats up when wearing it, immediately take it, and turn the tracker off either via the tracker settings or in the App.
10. Never connect to a mechanically damaged charger or if the batteries are swollen. Do not use batteries in this condition due to the risk of explosion.
11. When this product is in a de-energized state and outside the service area, the location function does not work.